

Faith CONNECTIONS



- ① Glen Blackmon and Austin Sanchez-Moran battle the pizza boxes
- ② One of Jim Mayhall and Linda Martinat's roofing crews.
- ③ The preschool at First Presbyterian, Ocean Springs
- ④ Linda and Eugene working on the roof
- ⑤ Taylor Pope, Matt Jenks, Dave Mayhall, Krisiti Reed and Alexis Hallen work on the preschool
- ⑥ Sometimes the heat can get to you!
- ⑦ Just a corner of the gym of 130!
- ⑧ Betsy Frese, Kim Glennon, Ellen Havey and Norah Johnson at Cathy's gazebo



⑨ Our mighty leader, Jim Cochrane



700 N. Sheridan Road
Lake Forest, IL 60045
(847)234 6250
Fax: 234-6283
www.firstchurchlf.org

Reaching out.....gathering together.....working for Christ.

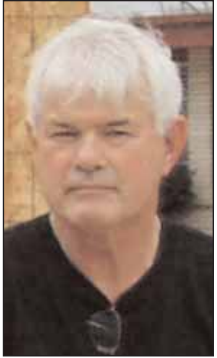


Dear friends,

The writer of Ecclesiastes says, “**There is a time for every purpose under heaven, a time to laugh and a time to cry, a time to rejoice and a time to mourn.**”

Now and then I believe it is appropriate to do both at once. This is such a time.

After 45 years of faithful ministry, Reverend Dr. Gordon Butcher has announced his retirement. We will miss Gordon in the life of the congregation and we rejoice with Gordon and his family as they enter this well-earned Sabbath season.



Gordon’s retirement will be effective October 1, 2006. In the meantime, he and the Personnel Committee and our staff are planning carefully for the transition. Though we can never replace Gordon, the All Church Nominating Committee will be recruiting members for an Associate Pastor Nominating Committee so that we can move efficiently to fill this important pastoral position. But, for now it is too early to say goodbye. Please continue to enjoy, with me, Gordon’s ongoing faithful work among us.

In Christ’s love, *Christine Chakoian*



One Safe Place is Open

The new One Safe Place transitional living building is now fully operational. The three-story structure, built on 11.5 acres, features 20 independent one-, two- and three-bedroom apartments with a total residential capacity of 49 persons. Unlike many transitional housing facilities, this program offers extensive onsite supportive services including individual and group counseling, case management, children's counseling, life skills and opportunities for job skills training.

Some helpful items needed for the battered women and their children are a **patio table with chairs, picnic table with benches, climber for youngsters, tricycles, big wheels, and other outdoor toys.** If you are able to **donate any of these, please call Betty Toser at (847) 234-5802.** Thank you.



First Presbyterian Church of Lake Forest
847-234-6250

SUNDAY, JULY 2
13TH SUNDAY IN ORDINARY TIME
10:00AM Worship

Reverend Dr. Don Dempsey
Communion
Susan Noble, soloist

Lectionary: 2 Samuel 1: 17-27
Psalm 130
2 Corinthians 8: 7-15
Mark 5: 21-43

SUNDAY, JULY 9
14TH SUNDAY IN ORDINARY TIME
10:00AM Worship

Reverend Christine Chakoian
Baptism
Stephen's Singers

Lectionary: 2 Samuel 5: 1-5, 9-10
Psalm 48
2 Corinthians 12: 2-10
Mark 6: 1-13

IN MINISTRY TOGETHER

Pastor/Head of Staff
Rev. Christine Chakoian
cchakoian@firstchurchlf.org

Executive Associate Pastor
Rev. Dr. Don Dempsey [Interim]
ddempsey@firstchurchlf.org

Assoc. Pastor **Rev. Dr. Gordon Butcher**
gbutcher@firstchurchlf.org

Parish Associate **Rev. Kent Kinney**
kkinney@firstchurchlf.org

Children's Ministry **Donna Birney**
dbirney@firstchurchlf.org

Youth Director **Kristie Finley**
kfinley@firstchurchlf.org

Director of Music/Organist **Jill Hunt**
jhunt@firstchurchlf.org

Preschool Director **Ruth Luke**
preschool@firstchurchlf.org

Church Business Manager **Herb Smyers**
hsmyers@firstchurchlf.org

Church website www.firstchurchlf.org

Faith Connections is published bimonthly and mailed to 1300 members and friends of

First Presbyterian Church of Lake Forest
700 North Sheridan Road, Lake Forest, IL 60045.

Submission due dates are the 1st and the 15th of every month. Submissions may be emailed (preferred method) to

publish@firstchurchlf.org

(or kwolff@firstchurchlf.org)

faxed to (847) 234-6283

or dropped off at the church office.

INSPIRED BY OUR HERITAGE



Stephen Ministry

Reflections of A Care Receiver

UPON REQUEST, A STEPHEN MINISTER, MALE AND FEMALE, PROVIDES CONFIDENTIAL, ONE TO ONE, EMOTIONAL AND SPIRITUAL SUPPORT TO A PERSON IN NEED FOR ANY REASON. TO MAINTAIN THAT CONFIDENCE, THE AUTHOR'S NAME HAS BEEN WITHHELD.



Every day as we watch our children get ready for school, they pack their backpacks with books, lunches, and sometimes a favorite possession or two. Then they head off for their day's activities. At the end of the day, the backpacks are emptied and the evening tasks get under way.

In much the same way, we adults pack up our burdens and concerns each morning and carry them around on our backs throughout our daily routines. But, unlike our children, we do not take off our backpacks at the end of the day and unpack them. We may take them off and set them in the corner for the evening, but the next day we pick them up again still full from the day before, and sometimes with a new item or two added. We do this week after week, until one day, we realize that our backpacks have gotten so full and so heavy that we can no longer carry them.

It was last year about this time that I realized that my backpack was bursting at the seams and was too heavy to carry with me every day. And on the days when I did carry it, I found myself getting more and more exhausted. Life's challenges became increasingly difficult to handle.

Then, I became acquainted with a Stephen Minister who met with me almost every week and helped carry my load. Some weeks, it was harder than others to open up that backpack and look inside, but my Stephen Minister remained a faithful constant in my life, ready to listen to whatever I was willing to share. What I realized in time was that just having someone to listen became a tremendous relief. My daily challenges were no longer burdens I needed to carry with me. I had someone who was willing to share the load, to offer a kind word, to remember me in her prayers.

A Stephen Minister isn't a mental health professional, but simply a kind, patient individual who is willing to lend a hand--and an ear. If you can offer a smile and a prayer, then you too might consider becoming a Stephen Minister. Or, if you find that your backpack is getting just a little too heavy, know that there can be a Stephen Minister waiting to help you carry it.

My own backpack is much lighter now and it never seems to be as full as it used to be. My Stephen Minister has helped me remember to unpack it now and then. She still meets with me, and she still has a kind word and a prayer to offer. Now, though, she does it not as my Stephen Minister, but as my friend.

Reproduced with permission of Stephen Ministries St. Louis.
To explore Stephen Ministry online, visit www.stephenministries.org.

TO LEARN MORE ABOUT HELP FROM A STEPHEN MINISTER FOR YOURSELF OR SOMEONE YOU CARE ABOUT, CALL PASTOR KENT KINNEY AT (847) 234-6250. TO REQUEST AN APPLICATION TO JOIN MORE THAN 60 OTHER TRAINED STEPHEN MINISTERS IN THE FIRST CHURCH FAMILY THROUGH PARTICIPATION IN THE FALL 2006 TRAINING CLASS, ASK FOR DONNA BIRNEY AT THE SAME NUMBER.

IN MEMORIAM

Arthur MacDougall Wood died on June 18. A Memorial service and thanksgiving for his life was held on June 22 in the Sanctuary, Reverend Kent Kinney officiated.



Summer Coffee Hour is casual and fun.

Families, individuals, groups of friends are invited to supply and host coffee hour in the summer. It takes about 10 grocery store sized, packaged items to serve the congregation. Coffee, tea, water and lemonade are supplied and prepared by the church. Hosting offers a great opportunity to meet new people. **Sign up sheet** is on the wall above the name tag table outside the reception office. Or contact Dawn Neal (847) 234-7632.

WE CALL OTHERS TO JOIN WITH US



WE WANT YOU AND YOUR FAMILY TO BE PICTURED IN OUR NEW CHURCH-FAMILY DIRECTORY

WHY PARTICIPATE?

Do you ever see people in church and wonder what their names are... or what their children's names are?

Have you heard an announcement regarding a member and wished you could put a face with the name?

Are you thinking about photographing your family for holiday gift giving?

Having your picture taken for our new Church-Family Directory is the solution!

WE NEED ALL OF YOU TO MAKE IT COMPLETE.

It will tell the story of our church, our members and friends, and our activities.

All church members, church families and friends of the church are invited to be part of this new directory.


There is no cost to you or the church to have your photographs taken, and you will receive a complimentary 8 x 10 portrait and directory just for participating. Immediately after you are photographed, you will view your images electronically.


At that time, you will have the opportunity to purchase additional portraits in different sizes to share with family and friends.

PHOTOGRAPHY AND PORTRAIT VIEWING SESSIONS WILL BE:

Thursday	August 3	3:00 - 9:00
Friday	August 4	3:00 - 9:00
Saturday	August 5	10:00 - 4:00
Wednesday	September 6	3:00 - 9:00
Thursday	September 7	3:00 - 9:00
Friday	September 8	3:00 - 9:00
Saturday	September 9	10:00 - 4:00
Sunday	September 10	1:00 - 7:00
Wednesday	September 13	3:00 - 9:00
Thursday	September 14	3:00 - 9:00
Friday	September 15	3:00 - 9:00
Saturday	September 16	10:00 - 4:00

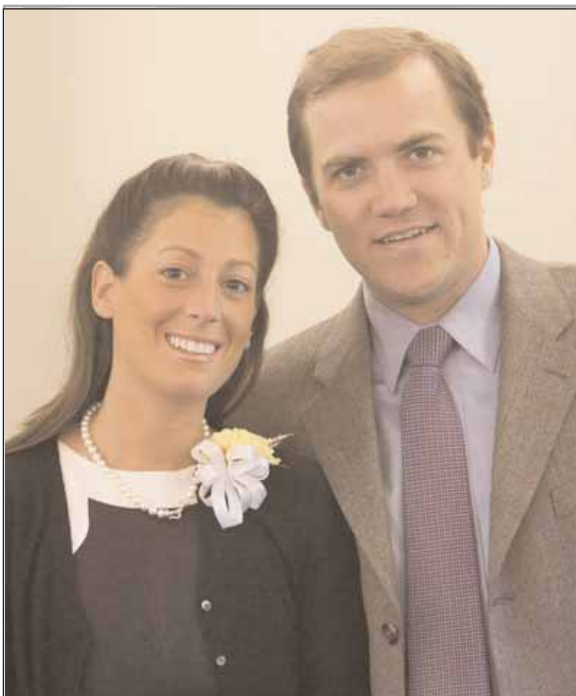
SIGN-UP OPTIONS:

 **Sunday mornings:**
30 minutes before (outside the church office)
and 30 minutes after the 10:00 service
(outside Fellowship Hall).

 **Monday - Friday:**
In person at the church office
from 9:00AM - 5:00PM or
via phone (847) 234-6250

TO MAKE OUR CHURCH-FAMILY DIRECTORY A SUCCESS, **WE NEED VOLUNTEERS!**
IF YOU ARE ABLE TO ASSIST DURING PHOTOGRAPHY SIGN-UPS OR WITH TELEPHONING,
CALL THE CHURCH OFFICE AT (847) 234-6250 OR SHARON KELLOCK AT (847) 604-9818.

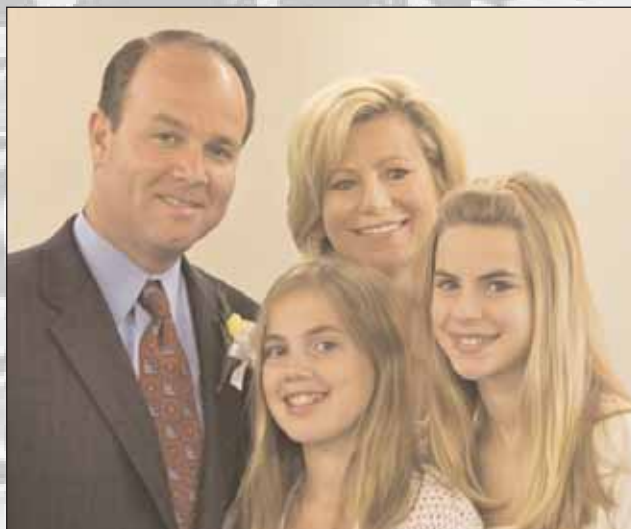
NEW MEMBERS



Brook Kettelle loves spending time with her family which includes two little dogs. She enjoys traveling, learning and getting to know new people. She currently works in administration for Coldwell Banker. She was married to First Church member, Graham Bayly on June 10.

Cheryl and Bill Killam

have three daughters, Ali (15), Caroline (13) and Haley (11). Caroline and Haley have helped out several times in our nursery. Cheryl's life work is caring for her family and volunteering at school. She enjoys tennis, reading



and her family. The warmth of the church called her to membership. Bill is in private banking with J.P. Morgan. He enjoys spending time with his family, tennis and paddle. Friends and family have called him to First Church.



Cynthia Hessemer

finds her purpose in building her relationship with God, caring for her family and teaching high school age youth. She enjoys outreach ministries, teaching and cooking. She is seeking a community of faith that will be a second family.



Martha and Greg Zeeman have three children, Caroline (4), John (7) and Brian (1, not pictured). Martha enjoys raising her children and nurturing her family. Greg believes having a wonderful family is his life's work. Professionally, he works at HSBC and enjoys golf at this time of year. Greg and Martha enjoy the warmth and community they have found at First Church.

NEW MEMBERS ARE A GIFT TO FIRST CHURCH.

EVERY INDIVIDUAL BRINGS A SPIRITUAL DIMENSION TO MEMBERSHIP BASED ON THEIR OWN LIFE EXPERIENCES.

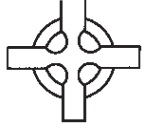
WE WELCOME THESE INDIVIDUALS WHO FORMALLY BECAME ACTIVE MEMBERS OF FIRST CHURCH ON MAY 21, 2006.

Please send submissions to publish@firstchurchfl.org

July 1, 2006
Faith Connections
is published
twice monthly.
Submission
due dates
are the
1st and the 15th
of the month.

www.firstchurchfl.org

700 N. Sheridan Road
Lake Forest, IL 60045
(847)234 6250
Fax: 234-6283
First Presbyterian
Church of Lake Forest
Centered in Christ, Growing in Faith



PERMIT N° 65
LAKE FOREST, IL

PAID

NON-PROFIT ORG.
U.S. POSTAGE

FIRST CHURCH VISION STATEMENT

Called together and centered in Christ's service, we are a fellowship growing in faith.

Relying on God's grace, we commit to fulfilling God's purpose for us by creating a welcoming, inclusive environment that inspires spiritual growth and celebration.

We journey together, caring for each other as we make deeper connections through prayer, worship, education and mission outreach.

We embrace the challenge to be faithful stewards of our God-given gifts and talents.

Inspired by our heritage of service and leadership, we are disciples of Christ, committed to making a positive difference in our families, community and beyond.

We call others to join with us as we journey into the future, strengthened by God's guidance and love.



First Presbyterian Church of Lake Forest **WORK TRIP** 2006
Ocean Springs, Mississippi